

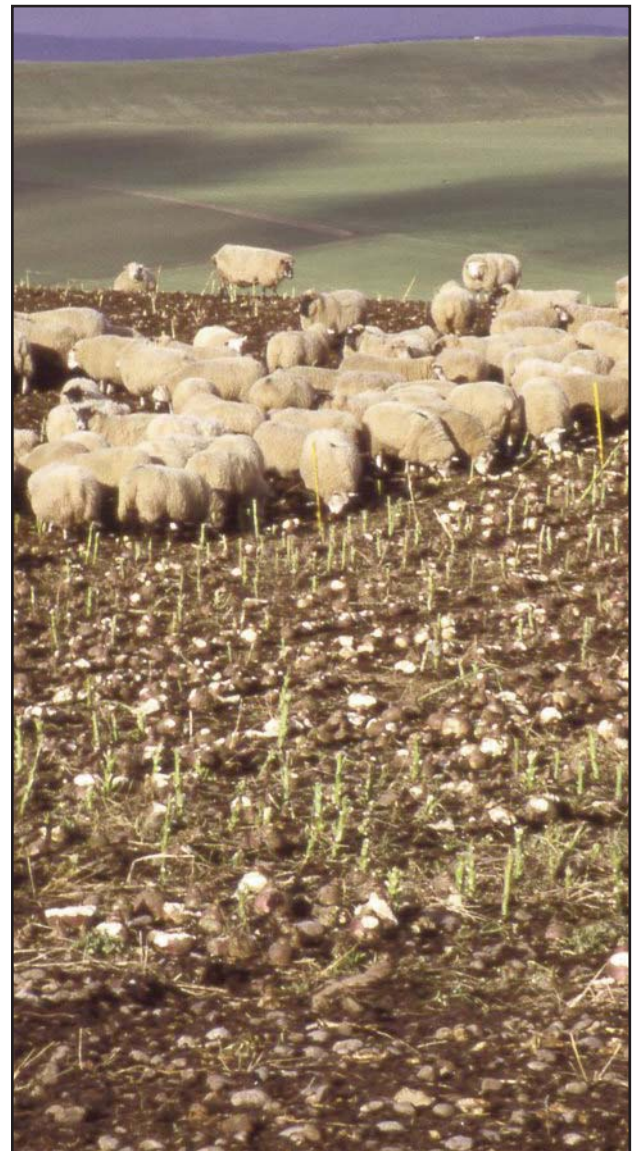


## Why Grow Swedes?

- Excellent high energy winter feed
- Low production costs
- Finishing lambs or winter maintenance
- High dry matter yields
- Cost effective  
(even where yields are only moderate)

## Typical Yields and Feed Quality

Average Dry Matter yield	= 7-10 tonnes/ha
Average fresh yields	= 70-80 tonnes/ha
Dry Matter	= 9-13%
Crude protein	= 10-11%
Digestibility value	= 82D
Metabolisable energy	= 12.8-13.1 MJ/kg DM



## Typical Costs and Value

	Total Costs
Cost per acre	£167 (£414/ha)
Cost per tonne fresh weight	£5
Cost per tonne utilised dry matter	£63
Relative Value £/tonne DM	£127
Cost per litre of milk	3.5p
Cost per kilo of live weight gain	22.9p



## Sowing, Growing and Feeding

<b>SOWING</b>	<b>Period</b>	April - June
	<b>Variety Selection</b>	Choose varieties to suit the desired grazing periods, either autumn or winter
	<b>Seed Rates</b>	Precision Drill = 350g-850g/ha (150g-350g/acre) Grade H Direct Drill = 3kg/ha (1kg/acre) Natural seed Broadcast = 5kg/ha (2kg/acre) Natural seed Cultivate = to achieve a fine, firm seedbed
	<b>Rotation</b>	Do not grow continuously, ideally at least on a 5 year rotation
<b>GROWING</b>	<b>Fertiliser</b>	Check P & K status and adjust accordingly. 60-68units of N/ac (75-85kg N/ha) may be incorporated into the seedbed, though account for muck applications. Lime at 1t/ac (2.4 t/ha) to keep the pH at 6.5. Refer to DEFRA's RB209 for more details.
	<b>Pests</b>	Watch out for flea beetles in dry conditions.
<b>FEEDING</b>	<b>Method</b>	Strip grazing will minimise wastage.



# SWEDE VARIETY SELECTION

## Choose Varieties to Suit the Desired Grazing Period

VARIETY	GRAZING PERIOD REQUIRED						
	Sept	Oct	Nov	Dec	Jan	Feb	Mar
Virtue/Brora	████████████████████						
Gowrie		████████████████████					
Lomond				████████████████████			
Invitation					████████████████████		

## Variety Features and Benefits



### VIRTUE

A new introduction, Virtue has a very **high dry matter yield** potential and is ideal for grazing from October to January. Virtue's excellent purple/red skin colour and yellow flesh will enable some crops to be sold into the culinary market. Bred by SCRI



### GOWRIE

This is a new variety bred by SCRI. Gowrie is a variety that can be utilised pre or post Christmas. It can produce **high dry matter yields** and exhibits good resistance to both club root and powdery mildew. Bred by SCRI



### LOMOND

High **fresh and dry matter yields** make this variety ideal for fattening lambs post- Christmas. Lomond has both powdery mildew and club root resistance and trials show it suffers less from rots and splits in its root. Bred by SCRI



### INVITATION

Invitation is a very uniform, **club root resistant variety**, ideal for utilisation after Christmas. Invitation also has excellent resistance to powdery mildew and will produce large leaves for extra grazing potential. Invitation is winter hardy and is suitable for sheep or cattle. Bred by SCRI



# SWEDE TRIAL DATA

Variety	Total Dry Matter Yield %	Total Fresh Yield %	Dry Matter %	Mildew Resistance 9 = Best	Root Shape 9 = Best
100%=Tonnes/Ha	9.6 t/ha	87.3 t/ha			
Gowrie	120	119	11.1	9	7
Lomond	113	110	11.4	9	6
Ruby	108	103	11.8	7	5
Invitation	107	93	12.7	8	5
Angela	106	107	10.8	4	5
Melfort	105	86	13.8	5	6
Virtue	102	102	10.8	6	6
Magres	102	94	12.3	7	6
Brora	101	106	10.5	3	7
Ruta Otofte	100	100	11.7	4	5
Helenor	97	92	11.6	3	7
Marian	96	96	11.1	5	5

Data Source: Limagrain UK & SCRI trials 1991 - 2008

## Financial Value of Each Variety

Variety	Dry Matter Yield %	Dry Matter Yield t/ha	Dry Matter Value £/ha	Extra £/ha against Ruta Otofte
Gowrie	120	11.28	1432.56	238.76
Lomond	113	10.62	1348.99	155.19
Ruby	108	10.15	1289.30	95.50
Invitation	107	10.06	1277.37	83.57
Angela	106	9.96	1265.43	71.63
Melfort	105	9.87	1253.49	59.69
Virtue	102	9.59	1217.68	23.88
Magres	102	9.59	1217.68	23.88
Brora	101	9.49	1205.74	11.94
Ruta Otofte	100	9.40	1193.80	0.00
Helenor	97	9.12	1157.99	-35.81
Marian	96	9.02	1146.05	-47.75

The dry matter value £/ha is calculated by using the Kingshay relative value of swedes at £123 per tonne of dry matter.